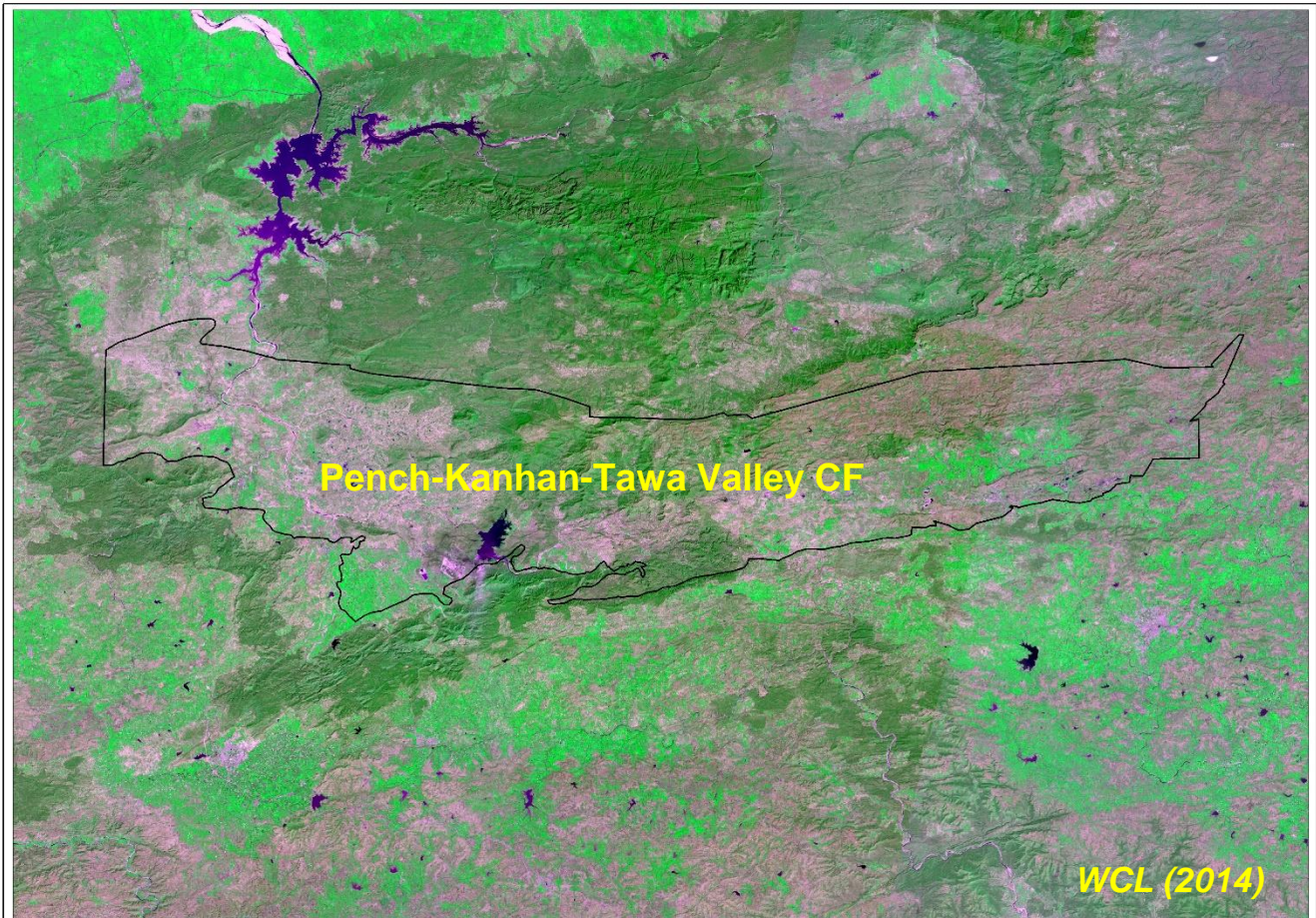


**REPORT ON  
Land use/Vegetation cover Mapping of  
Pench-Kanhan-Tawa Valley Coalfield  
based on Satellite data for the year- 2014**



*Submitted to*  
**Western Coalfields Limited**





## Central Mine Planning & Design Institute Ltd.

(A Subsidiary of Coal India Ltd.)

Gondwana Place, Kanke Road, Ranchi 834031, Jharkhand

Phone : (+91) 651 2230001, 2230002, 2230483, FAX (+91) 651 2231447, 2231851

Website : [www.cmpdi.co.in](http://www.cmpdi.co.in), Email : [cmpdihq@cmpdi.co.in](mailto:cmpdihq@cmpdi.co.in)